

---

## CRITERION II – TEACHING-LEARNING AND EVALUATION 2.7.1 STUDENT SATISFACTION SURVEY FOR GOVT. COLLEGE KULLU AQAR (2024-25)

---

Students Satisfaction Survey (SSS) was conducted among the students of the college through the College website. The questionnaire has been framed based on NAAC guidelines. Students have rated the question in a scale of 0 to 4. The result of this survey is based on the response of 1074 students.

**Number of responses received for the (SSS) survey =1074**

### Scoresheet

Questions	Average Score	Previous Score	Change
1. How much of the syllabus was covered in the class?	3.43	2.955	15.99%
2. How well did the teachers prepare for the classes?	3.27	3.226	1.31%
3. How well were the teachers able to communicate?	3.44	3.354	2.69%
4. The teacher's approach to teaching can best be described as	3.18	3.109	2.39%
5. Fairness of the internal evaluation process by the teachers.	3.40	3.405	-0.25%
6. Was your performance in assignments discussed with you?	3.22	3.109	3.41%
7. The institute takes active interest in promoting internship, student exchange, field visit opportunities for students.	2.98	2.773	7.55%
8. The teaching and mentoring process in your institution facilitates you in cognitive, social and emotional growth.	3.03	2.896	4.62%
9. The institution provides multiple opportunities to learn and grow.	3.12	3.091	0.82%
10. Teachers inform you about your expected competencies, course outcomes and programme outcomes	3.26	3.2	1.72%
11. Your mentor does a necessary follow-up with an assigned task to you.	3.08	3.082	0.06%

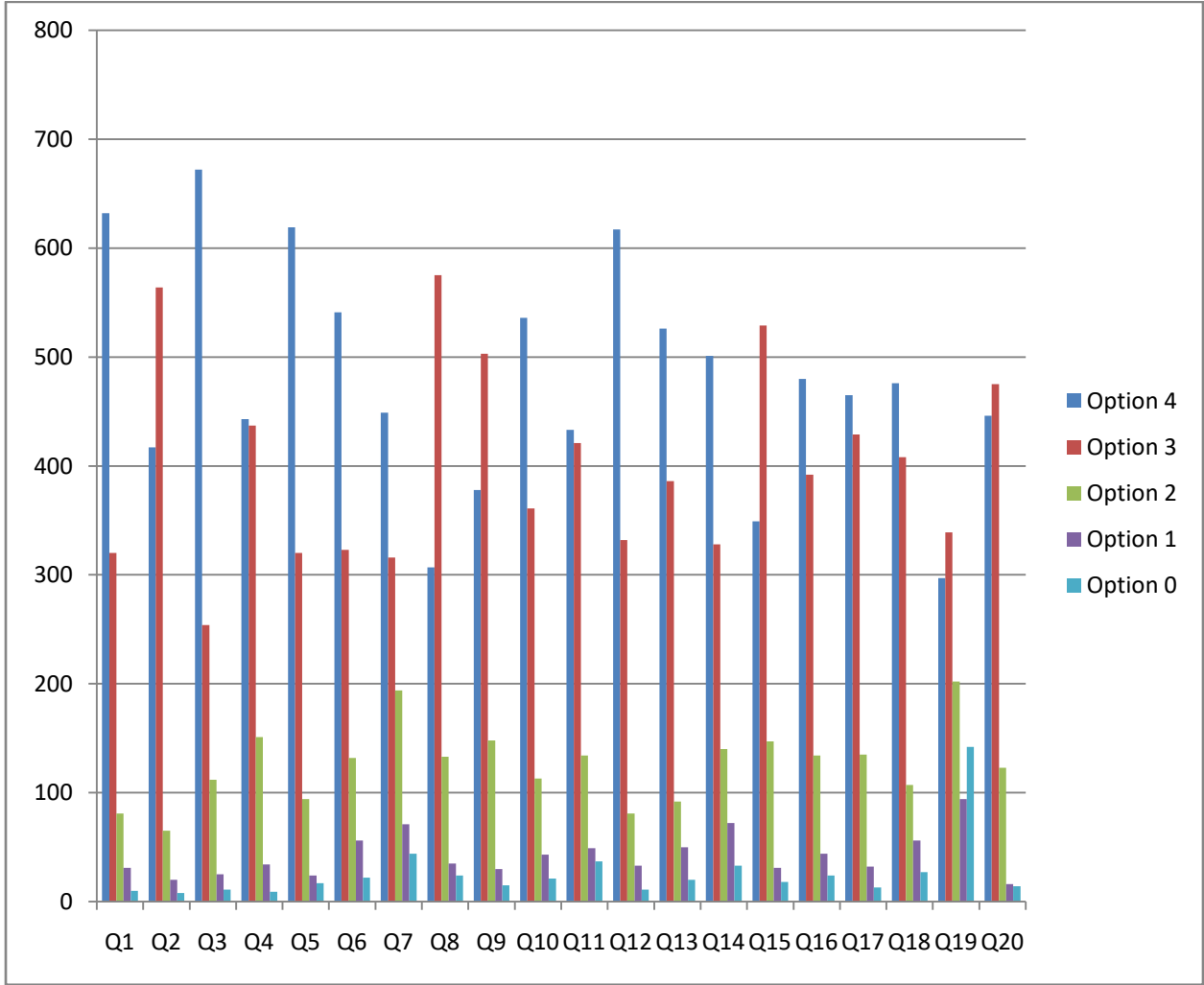
12. The teachers illustrate the concepts through examples and applications.	3.41	3.405	0.06%
13. The teachers identify your strengths and encourage you with providing right level of challenges.	3.26	3.158	3.08%
14. Teachers are able to identify your weaknesses and help you to overcome them.	3.11	3.042	2.23%
15. The institution makes effort to engage students in the monitoring, review and continuous quality improvement of the teaching learning process.	3.08	3.02	1.99%
16. The institute/ teachers use student centric methods, such as experiential learning, participative learning and problem solving methodologies for enhancing learning experiences.	3.17	3.07	3.36%
17. Teachers encourage you to participate in extracurricular activities.	3.21	3.229	-0.55%
18. Efforts are made by the institute/ teachers to inculcate soft skills, life skills and employability skills to make you ready for the world of work.	3.16	3.079	2.76%
19. What percentage of teachers use ICT tools such as LCD projector, Multimedia, etc. while teaching	2.52	2.455	2.52%
20. The overall quality of teaching-learning process in your institute is very good.	3.23	3.175	1.79%
<b>Over All</b>	<b>3.18</b>	<b>3.092</b>	

### Frequency Analysis:

	Option 4	Option 3	Option 2	Option 1	Option 0
<b>Q1</b>	632	320	81	31	10
<b>Q2</b>	417	564	65	20	8
<b>Q3</b>	672	254	112	25	11
<b>Q4</b>	443	437	151	34	9
<b>Q5</b>	619	320	94	24	17
<b>Q6</b>	541	323	132	56	22
<b>Q7</b>	449	316	194	71	44
<b>Q8</b>	307	575	133	35	24
<b>Q9</b>	378	503	148	30	15
<b>Q10</b>	536	361	113	43	21
<b>Q11</b>	433	421	134	49	37
<b>Q12</b>	617	332	81	33	11
<b>Q13</b>	526	386	92	50	20

<b>Q14</b>	501	328	140	72	33
<b>Q15</b>	349	529	147	31	18
<b>Q16</b>	480	392	134	44	24
<b>Q17</b>	465	429	135	32	13
<b>Q18</b>	476	408	107	56	27
<b>Q19</b>	297	339	202	94	142
<b>Q20</b>	446	475	123	16	14

**Frequency Distribution Chart:**



**Short Summary:**

- 18 Questions improved in Feedback
- Highest change in Q1
- Overall Score Improved from 3.092 to 3.18