

Self-Assessment Report (SAR) for Annual Internal Ranking (AIR) of Govt. Colleges of Himachal Pradesh for the Academic Session 2024-25

Criterion 1- Teaching Learning

1.4 Student Feedback (taken from students with 80% attendance)
1.4.1 Sample Size
<p>Total student intake in the Academic Session = 5459</p> <p>Total number of students participating in Student's Satisfaction Survey (SSS) = 1074</p> <p>Sample size = 19.67%</p>

Student Intake in the Academic Session 2024-25

CATEGORY WISE ENROLMENT OF STUDENTS SESSION 2024-2025 IN R/O GOVT COLLEGE KULLU DISTT. KULLU HP.															
1	2	3	4	5	6	7	8	9	10	11	12	13	14	15	16
Stream	Class/Stream wise	General		SC		ST		OBC		Total A (3+5+7+9)	Total B (4+6+8+10)	Total G. (11+12)	Handi caped		G. Total (14+15)
		B	G	B	G	B	G	B	G	B	G	All	B	G	All
Arts	B.A. 1st Year	429	458	15	15	63	70	2	1	667	693	1360	6	1	7
				1	2			4	3						
	B.A. 2nd Year	330	466	12	15	49	48	1	1	516	685	1201	5	2	7
				3	6			4	5						
Science (Medical)	B.A. 3rd Year	245	405	87	11	31	54	6	1	369	585	954	1	1	2
				0				6							
	Total	1004	1329	361	418	143	174	44	44	1552	1963	3515	12	4	16
Science (Non-Medical)	B.Sc. 1st Year	39	74	15	16	14	22	1	4	69	116	185	0	0	0
	B.Sc. 2nd Year	16	57	7	16	4	15	1	4	28	92	120	0	0	0
	B.Sc. 3rd Year	10	44	3	6	3	12	0	2	16	64	80	0	0	0
	Total	65	175	25	38	21	49	2	10	113	272	385	0	0	0
Commerce	B.Com. 1st Year	60	48	21	12	27	8	2	1	110	69	179	0	0	0
	B.Com. 2nd Year	66	52	7	15	9	9	4	2	86	78	164	0	0	0
	B.Com. 3rd Year	58	34	12	7	10	5	5	2	85	48	133	0	0	0
	Total	184	134	40	34	46	22	11	5	281	195	476	0	0	0
B.C.A.	B.C.A. 1st Year	40	41	22	20	16	9	2	1	80	71	151	0	0	0
	B.C.A. 2nd Year	43	42	16	11	10	12	0	4	69	69	138	0	0	0
	B.C.A. 3rd Year	28	30	8	11	6	13	1	2	43	56	99	0	0	0
	Total	111	113	46	42	32	34	3	7	192	196	388	0	0	0
B.B.A.	B.B.A. 1st Year	32	12	6	6	3	2	0	0	41	20	61	0	0	0
	B.B.A. 2nd Year	17	5	1	0	1	1	0	0	19	6	25	0	1	0
	B.B.A. 3rd Year	16	7	6	2	2	0	0	0	24	9	33	0	0	0
	Total	65	24	13	8	6	3	0	0	84	35	119	0	0	0
B.B.A.	B.B.A. 1st Year	23	10	2	4	1	1	3	0	29	15	44			
	B.B.A. 2nd Year	24	5	1	2	1	0	1	0	27	7	34			
	B.B.A. 3rd Year														
	Total														

M.A. English	Third Year	13	12	0	1	0	1	0	0	13	14	27			
	Total	60	27	3	7	2	2	4	0	69	36	105			
	First Year	11	12	2	3	1	1	1	0	15	16	31			
M.A. Hindi	Second Year	6	9	0	3	2	0	0	1	8	13	21			
	Total	17	21	2	6	3	1	1	1	23	29	52			
	First Year	3	26	1	3	0	0	0	1	4	30	34			
M.A. Economics	Second Year	3	16	0	5	1	2	0	0	4	23	27			
	Total	6	42	1	8	1	2	0	1	8	53	61			
	First Year	3	13	4	3	1	4	0	0	8	20	28			
M.A. Pol. Science	Second Year	2	13	4	1	0	0	0	0	6	14	20			
	Total	5	26	8	4	1	4	0	0	14	34	48			
	First Year	6	15	0	7	1	1	0	1	7	24	31			
MTA	Second Year	3	17	2	6	0	2	0	1	5	26	31			
	Total	9	32	2	13	1	3	0	2	12	50	62			
	First Year	12	16	2	1	0	1	0	0	14	18	32			
B.Voc.(Retail Management)	Second Year	17	8	4	0	1	1	0	0	22	9	31			
	Total	29	24	6	1	1	2	0	0	36	27	63			
	First Year	19	14	3	1	0	2	0	2	22	19	41			
B.Voc.(Hospitality and Tourism)	Second Year	11	7	2	0	1	0	1	0	15	7	22			
	Third Year	7	10	0	1	1	0	0	0	8	11	19			
	Total	37	31	5	2	2	2	1	2	45	37	82			
Grand Total	First Year	24	11	2	0	2	1	0	1	28	13	41			
	Second Year	20	9	2	0	1	0	2	0	25	9	34			
	Third Year	12	10	2	2	1	1	0	0	15	13	28			
Grand Total	Total	56	30	6	2	4	2	2	1	68	35	103			
	Grand Total	163	200	51	58	26	29	6	7	2497	2962	5459	12	6	16
		1	0	8	3	3	8	8	3						

Principal
Govt College
Kullu (H.P.)

CRITERION 1.4– TEACHING-LEARNING AND EVALUATION STUDENT SATISFACTION SURVEY FOR GOVT. COLLEGE KULLU AQAR (2024-25)

Students Satisfaction Survey (SSS) was conducted among the students of the college through the College website. The questionnaire has been framed based on NAAC guidelines. Students have rated the question in a scale of 0 to 4. The result of this survey is based on the response of 1074 students.

Number of responses received for the (SSS) survey =1074

Scoresheet

Questions	Average Score	Previous Score	Change
1. How much of the syllabus was covered in the class?	3.43	2.955	15.99%
2. How well did the teachers prepare for the classes?	3.27	3.226	1.31%
3. How well were the teachers able to communicate?	3.44	3.354	2.69%
4. The teacher's approach to teaching can best be described as	3.18	3.109	2.39%
5. Fairness of the internal evaluation process by the teachers.	3.40	3.405	-0.25%
6. Was your performance in assignments discussed with you?	3.22	3.109	3.41%
7. The institute takes active interest in promoting internship, student exchange, field visit opportunities for students.	2.98	2.773	7.55%
8. The teaching and mentoring process in your institution facilitates you in cognitive, social and emotional growth.	3.03	2.896	4.62%
9. The institution provides multiple opportunities to learn and grow.	3.12	3.091	0.82%
10. Teachers inform you about your expected competencies, course outcomes and programme outcomes	3.26	3.2	1.72%
11. Your mentor does a necessary follow-up with an assigned task to you.	3.08	3.082	0.06%

12. The teachers illustrate the concepts through examples and applications.	3.41	3.405	0.06%
13. The teachers identify your strengths and encourage you with providing right level of challenges.	3.26	3.158	3.08%
14. Teachers are able to identify your weaknesses and help you to overcome them.	3.11	3.042	2.23%
15. The institution makes effort to engage students in the monitoring, review and continuous quality improvement of the teaching learning process.	3.08	3.02	1.99%
16. The institute/ teachers use student centric methods, such as experiential learning, participative learning and problem solving methodologies for enhancing learning experiences.	3.17	3.07	3.36%
17. Teachers encourage you to participate in extracurricular activities.	3.21	3.229	-0.55%
18. Efforts are made by the institute/ teachers to inculcate soft skills, life skills and employability skills to make you ready for the world of work.	3.16	3.079	2.76%
19. What percentage of teachers use ICT tools such as LCD projector, Multimedia, etc. while teaching	2.52	2.455	2.52%
20. The overall quality of teaching-learning process in your institute is very good.	3.23	3.175	1.79%
Over All	3.18	3.092	

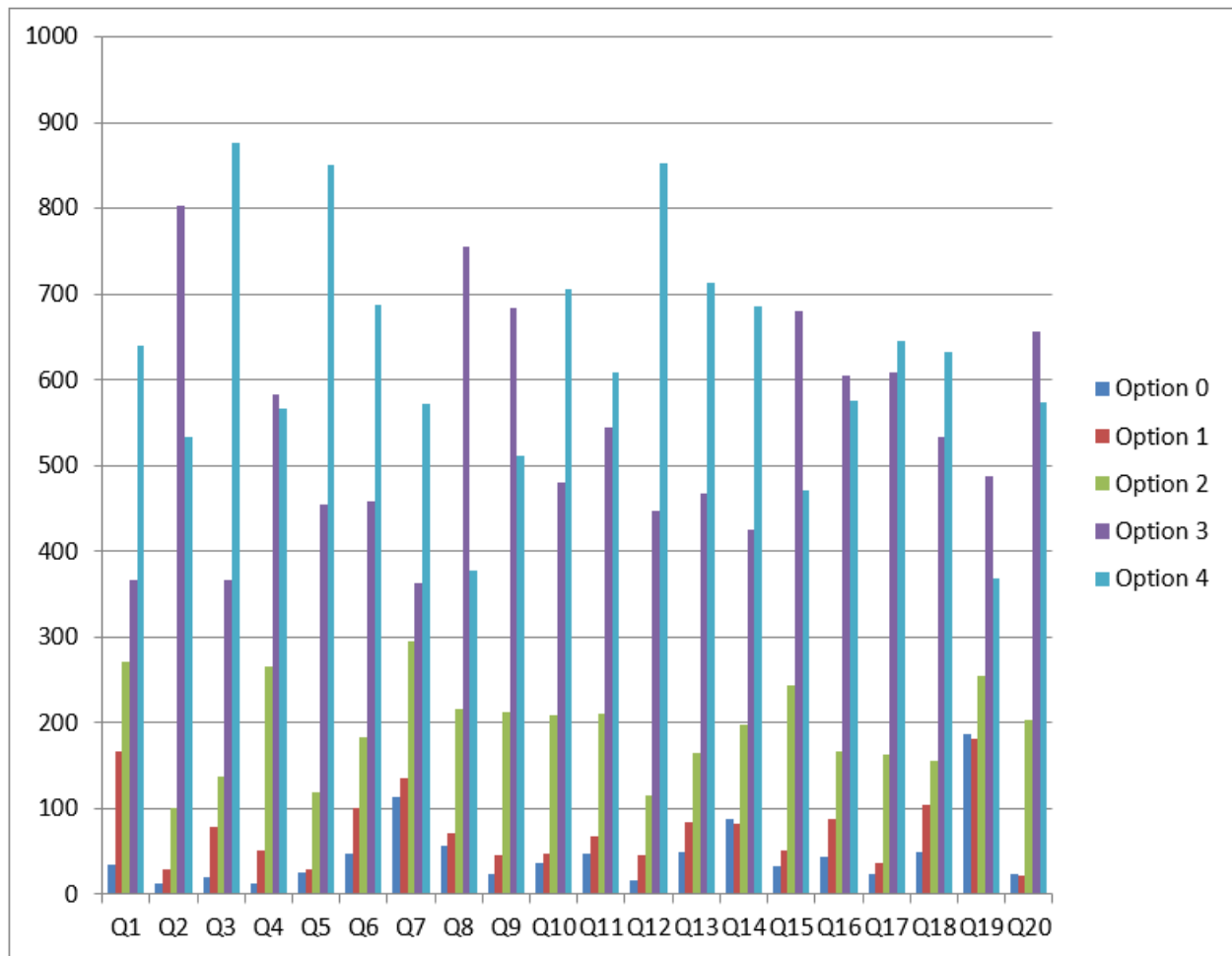
Frequency Analysis:

	Option 4	Option 3	Option 2	Option 1	Option 0
Q1	632	320	81	31	10
Q2	417	564	65	20	8
Q3	672	254	112	25	11
Q4	443	437	151	34	9
Q5	619	320	94	24	17
Q6	541	323	132	56	22
Q7	449	316	194	71	44
Q8	307	575	133	35	24
Q9	378	503	148	30	15
Q10	536	361	113	43	21
Q11	433	421	134	49	37
Q12	617	332	81	33	11
Q13	526	386	92	50	20

FREQUENCY ANALYSIS

	Option 0	Option 1	Option 2	Option 3	Option 4
Q1	34	166	272	366	640
Q2	13	30	100	802	533
Q3	20	78	137	367	876
Q4	12	52	265	583	566
Q5	25	29	119	454	851
Q6	48	100	183	459	688
Q7	114	135	295	362	572
Q8	57	71	217	756	377
Q9	24	46	213	683	512
Q10	36	47	208	481	706
Q11	47	68	210	545	608
Q12	16	46	115	448	853
Q13	49	84	164	468	713
Q14	87	83	197	425	686
Q15	32	51	244	680	471
Q16	44	87	167	604	576
Q17	24	36	163	609	646
Q18	50	105	156	534	633
Q19	186	181	255	487	369
Q20	23	22	203	656	574

FREQUENCY DISTRIBUTION

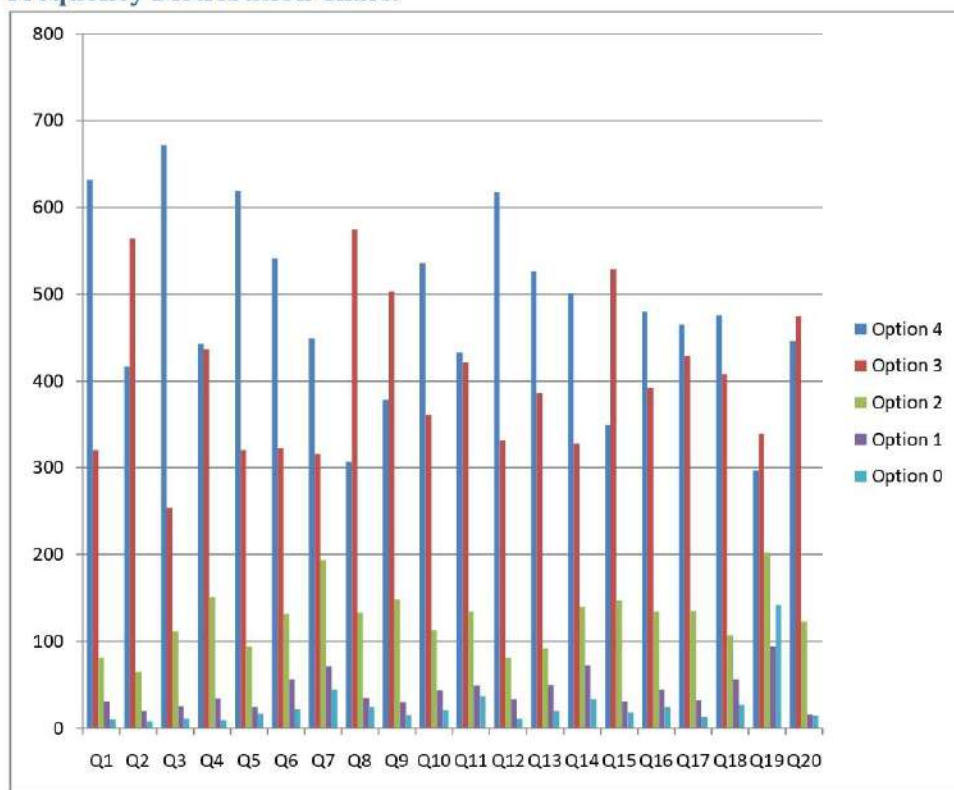


SHORT SUMMARY:

- 16 Questions have average score more than 3.
- 4 Questions have average score less than 3.
- 10 Questions had improved score over last year.
- 10 Questions had reduced score over last year.
- Best score on Question 5 and Question 12.
- Lowest score on Question 19.
- Largest score improvement on Question no. 19 (7.66%)
- Largest score drop on Question no. 1 (-16%)

Q14	501	328	140	72	33
Q15	349	529	147	31	18
Q16	480	392	134	44	24
Q17	465	429	135	32	13
Q18	476	408	107	56	27
Q19	297	339	202	94	142
Q20	446	475	123	16	14

Frequency Distribution Chart:



Short Summary:

- 18 Questions improved in Feedback
- Highest change in Q1
- Overall Score Improved from 3.092 to 3.18